

# Accessing Canvas Course Sites and BigBlueButton

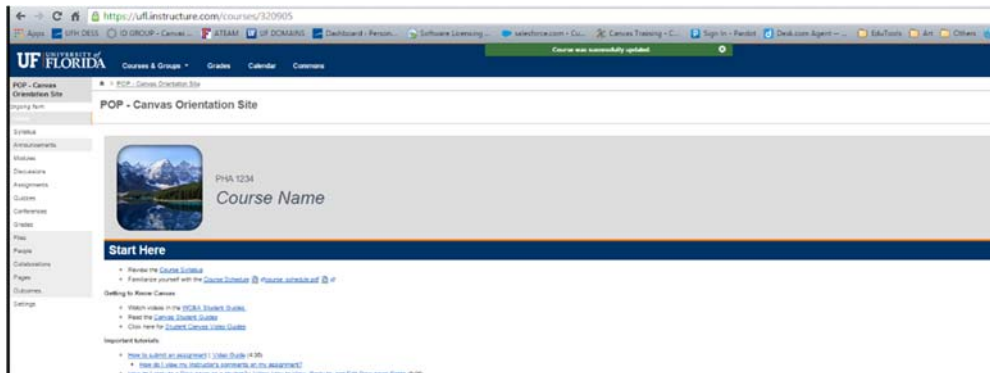
1. Point your Web browser to <https://lss.at.ufl.edu>. This is the same site where you used to access Sakai.
2. Click on the blue button that says “e-Learning in Canvas.”



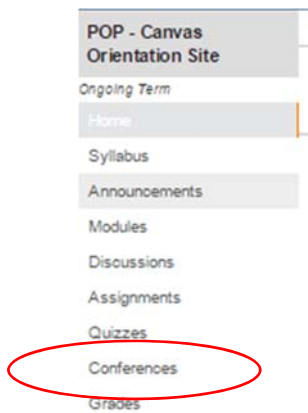
3. Log in with your Gatorlink username and password. Once your credentials are authenticated, you'll be in the Canvas main page.
4. Click on the “Courses” or “Courses & Groups” drop down from the top navigation bar, and click on the name of your course. (HINT: If you don't see your course listed, click “View All.”)



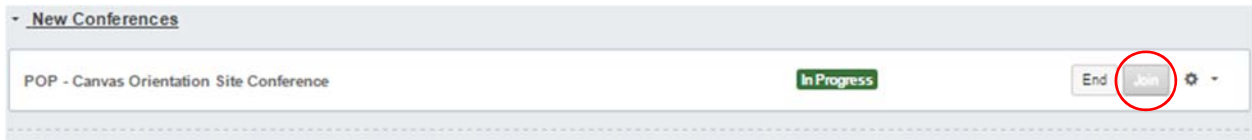
5. Now you're in your course's Canvas home page.



6. Click on the “Conferences” tab from the left-hand navigation



7. Click the button to JOIN the conference.

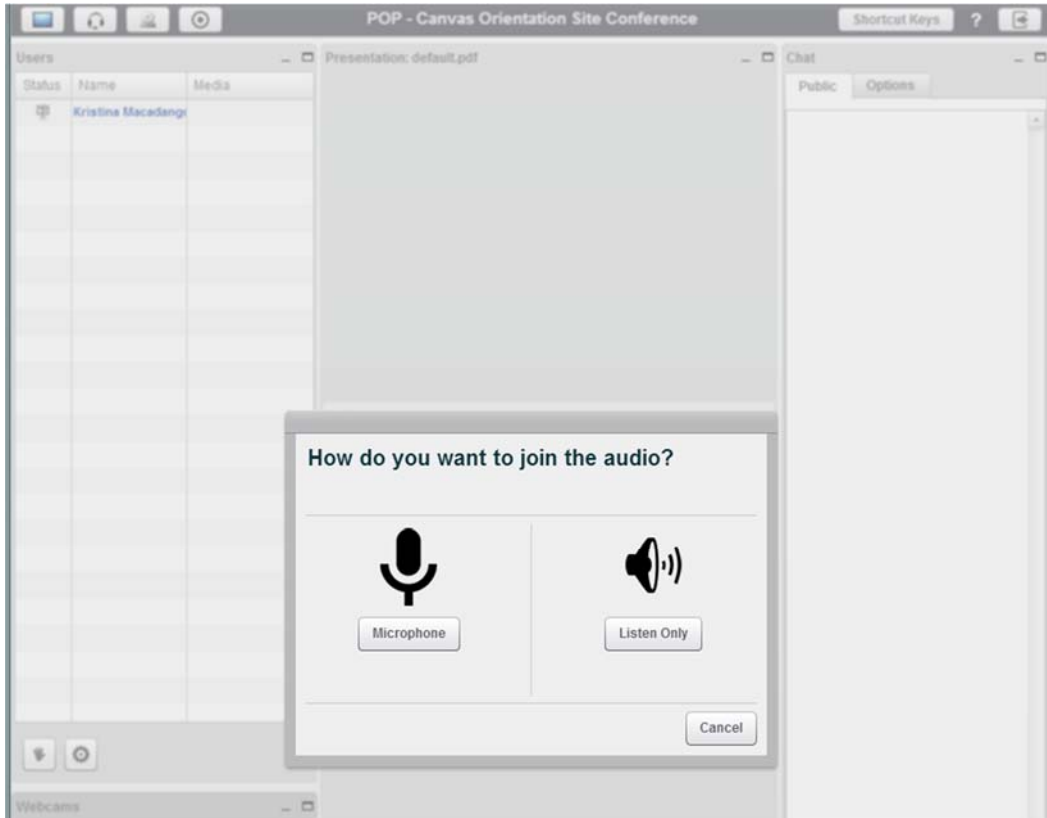


8. Once you click join, you will be taken to a window similar to the one below.

For directions on connecting to BigBlueButton conferences via Audio, click this link:

<http://guides.instructure.com/m/4152/l/41866-how-do-i-join-a-conference-that-has-already-started>

If you are experiencing sound issues, you may need to go the permissions settings, and audio tests again.



For a brief Viewer Overview of BigBlueButton features and navigation, see this video:

<https://www.youtube.com/watch?v=oh0bEk3YSwI&feature=youtu.be> (03:02)